

Virtual Pinball Cabinet

Widebody (Assembled/Glued)

What's Included

Here's the list of what's included. There's no optional surcharge for this or that—just one price for the best value.

- **Main Body** – Widebody design, made from 18mm black-coated birch plywood, fully assembled and glued
- **Backbox** – 18mm black-coated birch plywood, assembled, lockable, and openable from the back
- **Adjustable Playfield Monitor Holder** – Fits 42"-43" screens
- **Adjustable Backglass Monitor Holder** – Fits screens up to 32"
- **Backglass Panel** – Laser-cut 3mm clear acrylic
- **Backglass Panel Locking Mechanism** – Keeps the panel securely in place
- **Speaker Panel** – Powder-coated press-bent sheet metal, designed for 15.6" DMD screens, with black MDF inserts for easy installation of 5.25" speakers and LED strips
- **Backbox Hinges** – Powder-coated press-bent sheet metal
- **Internal Shelving & Partitions** – For mounting electronics, PC, and VPin toys
- **Pinball Leg Spacers** – CNC-routed wood spacers
- **T-Molding Slots** – Pre-routed on backbox and main body for easy installation of glass channels
- **Pre-cut Openings for Buttons & USB Plug** – Conveniently placed at the front bottom of the cabinet
- **Pre-cut Ventilation Openings** – Designed for 3x 120mm fans, plus cutout for 6" subwoofer
- **Pre-cut Power Socket Opening** – Located at the back of the cabinet
- **Pre-drilled Leg Mounting Holes** – Three precision-cut holes for attaching pinball legs (Holes 1 & 2 fit 28.5" legs, Holes 2 & 3 fit 30.5" legs)
- **Flexible straps** to secure the playfield holder in place while working inside the cabinet.
- **Widebody Compatibility** – Works with standard pinball parts like widebody lockdown bars, side rails, leg brackets, etc.

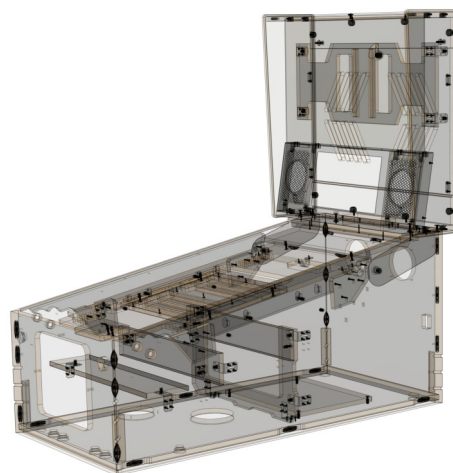


Shout-out to the VPin community!

First off, a huge thanks to everyone who followed this build. Your support, comments on social media, and overall enthusiasm helped turn this project into an actual product—one that you can get your hands on.

The Main Goal

The idea was simple: create a ready-made cabinet so you can skip the woodworking entirely. That first big step is already taken care of. There's still plenty to do, like adding your own artwork decals, getting the rest of the cabinet hardware, installing electronics, or setting up the software. But now you can focus on that without worrying about cutting, sanding, gluing, or painting. No need for a messy garage setup—just jump straight into the tidier part of the project!



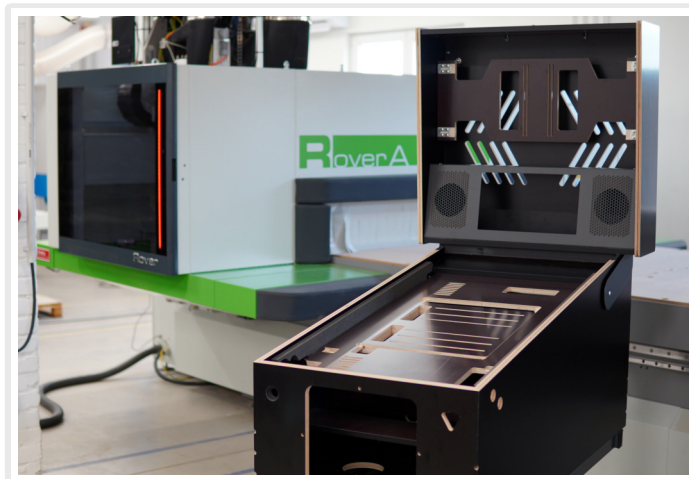
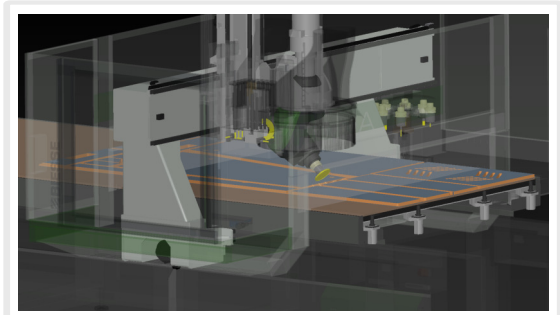
TUKKARI.EU



TUKKARI.COM

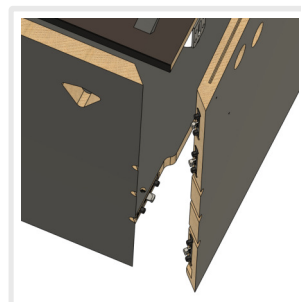
Advanced CNC Routing

For manufacturing parts of the cabinet, we use an industrial-grade 5-axis flat-table CNC router. This allows us to create components with advanced features and maximum precision.



Quality Birch Plywood

The main cabinet and backbox are entirely constructed from 18mm black-coated birch plywood. Internal components, such as monitor holders, are made from 15mm dark brown-coated birch plywood. The coated surface is perfectly flat, making it ideal for the super easy application of decals.

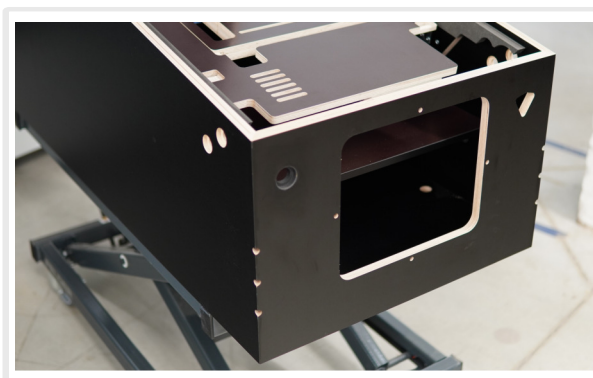
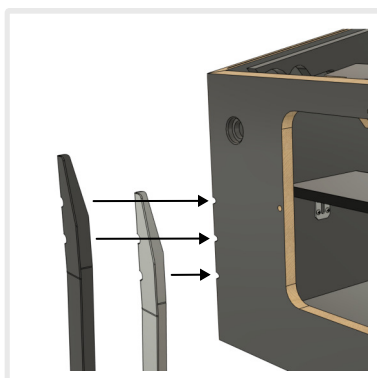


Strong Glued Joints

The joints of the main body are milled with hidden Lamello connectors. Combined with glue, these connectors create strong joints while maintaining clean, unexposed corners—allowing decals to be applied without the need for sanding, puttying imperfections, and painting. While the main body is fully and permanently glued, the backbox is assembled using standard furniture connectors, allowing it to be completely disassembled and reassembled if needed.

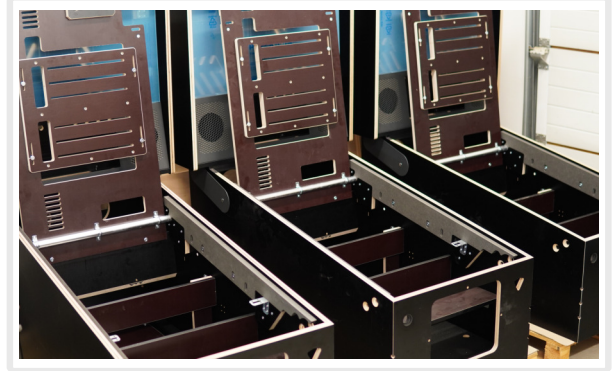
Pre-drilled Leg Mounting Holes

For each leg, three holes are precisely drilled. The first and second holes are for use with 28.5" pinball legs, while the second and third holes are for use with longer 30.5" pinball legs. The unused hole is always hidden. The delivery also includes 4 leg spacers made of wood. We recommend using it ideally with the Williams/Bally leg brackets #01-11400-1 (leg brackets not included).

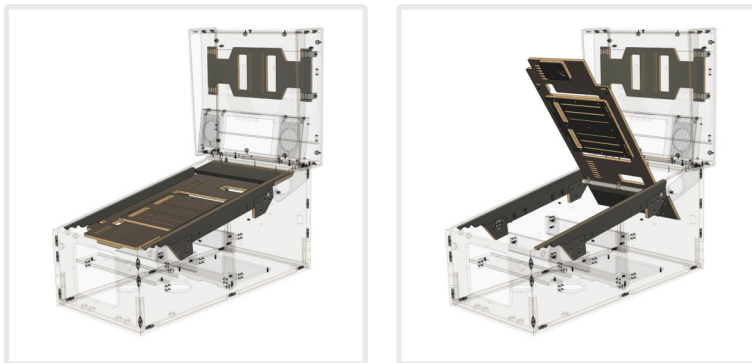


Adjustable Playfield Holder

This is a widebody cabinet, so it can accommodate 42-43" screen. It has been built around the popular 42" LG C3 TV, so we highly recommend grabbing one of these C3 or C4 models. However, it's designed to be as universal as possible to ensure it's futureproof. So, if you decide to upgrade your playfield screen in the future, you may not even need to modify the holder. It supports monitors and TVs with VESA mount systems of 100x100, 200x200, and 200x300.



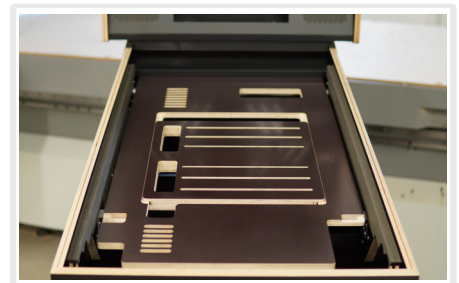
Parallel-to-the-glass position:



The screen position can be adjusted left to right, back and forth, and even slightly up and down. Plus, **the holder can be easily adjusted between the "classic" lowered position and the currently more preferred parallel-to-the-glass position** by simply unscrewing, repositioning, and tightening a few screws (all screws are provided and holes are pre-drilled).

The cabinet is delivered with the playfield holder set to the parallel-to-the-glass position by default. Should you decide to change that, please follow the instructions in the user manual. You will only need a screwdriver and an Allen key to do so. The Allen key is provided.

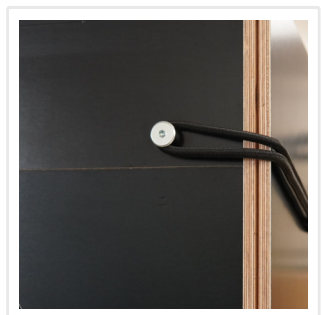
"Classic" lowered position:



Safety Straps

When working on your cabinet, be sure to secure the playfield using the provided straps. While the playfield can stay in a vertical position on its own, these straps are there to give you extra peace of mind—ensuring that no accidents happen!

This all works, of course, only if the backbox is securely tightened to the main body with the two provided bolts, so it cannot fold down. Be sure to check that out too.

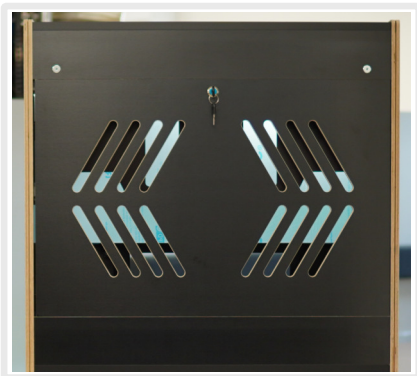


Backglass Monitor Holder

The backbox can accommodate 32" monitors. Once the monitor is attached to the holder, it can be easily adjusted in the up/down direction, as well as back and forth, and is compatible with VESA 75x75 and 100x100 mounting systems.

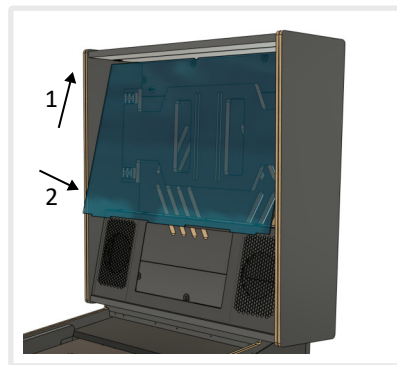
T-Molding Slots

The side panels of the backbox have routed T-molding slots. T-molding slots are also routed on the side panels of the main body to accommodate the glass channels.



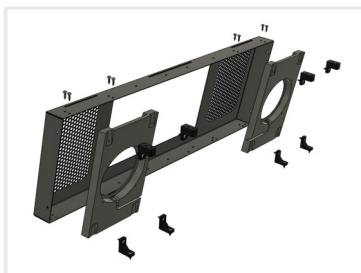
Clear Acrylic Panel

A 3mm clear acrylic lasercut backbox panel is included. Simply slide the panel into the prepared slot (1), snap the bottom part into the slots on the speaker panel (2), and then secure it with the provided screw (3).



Lockable Backbox

The rear side of the backbox is lockable. A camlock and a set of two keys are included. The rear panel can be completely removed once unlocked. Compared to hinges, we consider this a more practical solution, as the cabinet doesn't need to be moved too far from the wall to allow access.



Speaker Panel

Powder-coated press-bent sheet metal panel, designed for 15.6" DMD screens, with black MDF inserts for easy installation of 5.25" speakers and LED strips

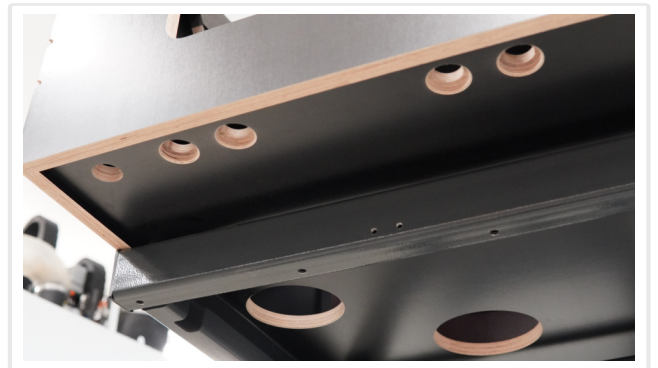
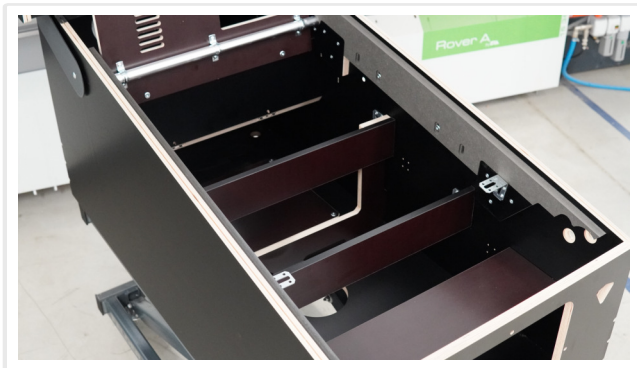
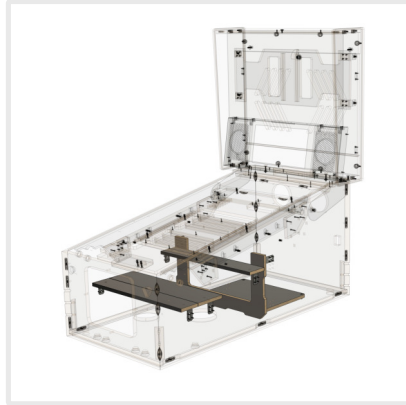


Backbox Hinges

Powder-coated metal hinges are also included with the cabinet and come pre-installed.

Internal Shelving & Partitions

Designed for mounting electronics, the PC, and feedback devices. The cabinet's side panels come pre-drilled, allowing you to organize the internal components however you prefer. Here are some examples of possible layouts—all without the need to drill anything yourself.



Packaging

Last but not least—nothing is left to chance when it comes to packing! The sturdy wooden crate ensures your cabinet stays safe, even on a journey halfway across the globe... only to arrive at your doorstep, looking just like a real NIB pinball machine.



Where We Ship

Europe:

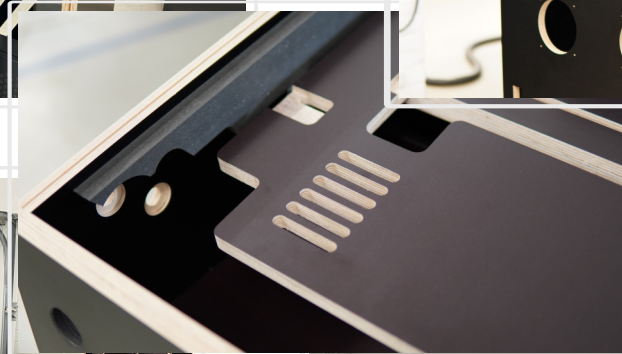
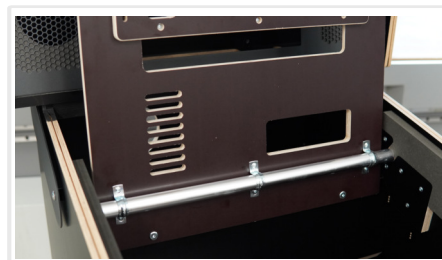
EU countries, United Kingdom, Norway, Switzerland

North America:

USA, Canada

(See last page for more details.)

Photogallery



Pallet Shipping – FedEx Regional Freight



Austria, Belgium, France, Germany, Hungary, Italy, Luxembourg, Netherlands, Poland, Slovenia
United Kingdom
Estonia, Finland, Ireland, Latvia, Lithuania
Denmark, Greece, Spain, Sweden
Norway, Switzerland

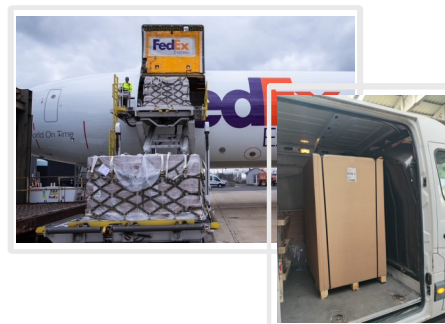


Pallet Shipping – FedEx Freight



USA - FedEx International Economy Freight
USA - FedEx International Economy Freight (Last Minute)

CANADA - FedEx International Economy Freight
CANADA - FedEx International Economy Freight (Last Minute)



Check the current pallet shipping rates on our webshop. Simply add the cabinet to your cart, select the destination country at checkout, and the total price including shipping will be calculated instantly.

Designed, manufactured, and sold by:

CZEKO GROUP, s.r.o. (Established 1995)
VAT ID: CZ64048951

Factory & Warehouse Address:
Drazdanska 562
400 07 Usti nad Labem
Czech Republic, EU

Email: info@tukkari.com

Website:
www.tukkari.com (CANADA, USA)
www.tukkari.eu (EU, UK, NO, CH)

Tel: +420 773 156 078

Available payment options:

Bank transfer
Credit card payment

Cabinet Decal Printing Service

Did you know that we also offer a high-quality decal printing service? Anyone who orders a cabinet from us can take advantage of this and order decals at a discounted rate. We print your artwork on our top-of-the-line MIMAKI UCJV300-160 UV printer with liquid lamination.

The printing service will be available starting May 2025.

